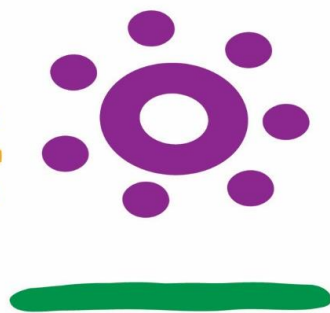




# Corporate Membership Application

## 2022-2023



# IMAGINE ROTARY

**Rotary Club of Oldsmar/Eastlake**

PO BOX 1372 Oldsmar FL 34677

[rotaryclub@oldsmareastlakerotary.org](mailto:rotaryclub@oldsmareastlakerotary.org)

## Our Vision

The Rotary Club of Oldsmar/Eastlake is made up of a diverse group of civic-minded business leaders and professionals who join together for fellowship, professional enrichment, and the opportunity to serve. Our members volunteer time, donate money and expertise to help make our local community and the rest of the world a better place to live.

## Our Mission

It is our mission to embrace the ideals of Rotary International, to provide service to others, promote integrity, and advance world understanding, goodwill, and peace through its fellowship of business, professional, and community leaders.

Rotary International, the world's first service club organization, is made up of over 35,000 clubs in more than 208 countries and geographical areas. Its members form a global network of business and professional leaders who volunteer their time and talents to serve their communities and the world.

Rotary's motto, '**Service Above Self**', exemplifies the humanitarian spirit of the organization's more than 1.2 million members. Strong fellowship among Rotarians and meaningful community and international service projects characterize Rotary worldwide.

## Fellowship

Beyond Community service, Rotary activities include fellowship, social activities and the opportunity to form strong, lifelong friendships.

## About Rotary International

Rotary is essentially a grassroots organization, with most of its service efforts being carried out at the club level. The district and international structure is designed to support the clubs and help them provide more service in their communities and abroad.

- **Clubs:** Rotarians are members of Rotary clubs, which belong to the global association Rotary International (RI). Each club elects its own officers and enjoys considerable autonomy within the framework of Rotary's constitution and bylaws.
- **Districts:** Clubs are grouped into 530 RI districts, each led by a district governor, who is an officer of RI. The district administration, including assistant governors and various committees, guides and supports the clubs.
- **RI Board:** The 19-member RI Board of Directors, which includes the RI President and President-elect, meets quarterly to establish policies. Traditionally, the RI President, who is elected annually, develops a theme and emphasis for the year.
- **Location:** Rotary International is headquartered in the Chicago suburb of Evanston, Illinois, USA, with seven international offices.

## **Corporate Membership in a Service Club – a 21st Century Solution**

Recognizing the growing importance that corporations place on corporate social responsibility, our Club offers your business this corporate membership opportunity.

Corporate memberships invite businesses of all sizes to participate in giving back to the community through the well organized systems and structures of Rotary. Membership in Rotary offers an excellent vehicle for staff leadership development.

The Club provides a medium to learn about community needs in a variety of areas, and learn about and participate in fundraising and volunteering in ways that truly positively impact the community.

## **Great Incentives for Your Business to become a Corporate Member of the Rotary Club of Oldsmar/Eastlake**

Participation as an active member of the Rotary Club of Oldsmar/Eastlake presents a number of advantages through an effective business partnership that includes:

- Participation in a complete, developed system capable of assessing and responding to a diverse range of needs within the community;
- Increased awareness within the community through association with Rotary and the many programs that are supported by Rotary clubs.
- Enhanced community exposure through the involvement of middle management as well as senior executives.
- Encourage members to attend district conferences and meet business leaders from other clubs.
- Immediate access to the Rotary charitable network.
- Participation opportunities with Rotary hands-on projects.
- Membership of an organization dedicated to making a difference in supporting local community and in the world.

### **Rotary Corporate Member Benefits**

A Rotary Corporate Membership will provide the opportunity for you to engage up to three team members from your business to participate in the Club. These corporate members will be provided the same rights and obligations as individual members.

#### ***Time is often a challenge and Oldsmar/Eastlake Rotary recognized that!***

Busy corporate members benefit greatly from accessing a Corporate Membership, enabling your team to share attendance. Although all of your representatives are welcome and encouraged to attend meetings together, the flexibility of Corporate Membership also affords you the opportunity to 'share' attendance between all of you, thus maintaining a regular presence at functions, lunches and official events. This has been specifically tailored for busy individuals, finding it difficult to commit to a regular weekly attendance.

Your primary member should be drawn from your senior executive group, with Associate members then appointed by the senior member to then enable you together to develop your own specialized strategy for participation in Club activities.

Our Club's Executive will work with your business to tailor its participation in the Club – working together to align and support the needs of both parties.

## Membership Criteria

- Your business can have one primary and up to two associate members.
- The primary member and the Club, will participate in a screening process to ensure an appropriate 'fit' between the two organizations; associate members will be selected by the primary member;
- Your corporation will be able to replace a member if required;
- Should a primary or associate member leave your corporation, the member may request to join the Club as an individual member;
- An annual corporate membership investment is less than \$42 per month, only \$495 per year.

## Responsibilities of Club Membership

The club is the cornerstone of Rotary, where the most meaningful work is carried out. All effective Rotary clubs are responsible for four key elements:

1. Sustaining or increasing their membership base.
2. Participating in service projects that benefit their community and in the world.
3. Supporting The Rotary Foundation financially and through program participation.
4. Developing leaders capable of serving in Rotary beyond the club level.

What Rotarians get out of Rotary depends largely on what they put into it. Many membership requirements are designed to help members more fully participate in and enjoy their Rotary experience.

## Rotary's Guiding Principles

**These principles have been developed over the years to provide Rotarians with a strong, common purpose and direction. They serve as a foundation for our relationships with each other and the action we take in the world.**

## Object of Rotary

The Object of Rotary is to encourage and foster the ideal of service as a basis of worthy enterprise and, in particular, to encourage and foster:

- **FIRST:** The development of acquaintance as an opportunity for service;
- **SECOND:** High ethical standards in business and professions; the recognition of the worthiness of all useful occupations; and the dignifying of each Rotarian's occupation as an opportunity to serve society;
- **THIRD:** The application of the ideal of service in each Rotarian's personal, business, and community life;
- **FOURTH:** The advancement of international understanding, goodwill, and peace through a world fellowship of business and professional persons united in the ideal of service.

## **The Four-Way Test**

The Four-Way Test is a nonpartisan and nonsectarian ethical guide for Rotarians to use for their personal and professional relationships. The test has been translated into more than 100 languages, and Rotarians recite it at club meetings:

Of the things we think, say or do

1. Is it the TRUTH?
2. Is it FAIR to all concerned?
3. Will it build GOODWILL and BETTER FRIENDSHIPS?
4. Will it be BENEFICIAL to all concerned?

## **Avenues of Service**

We channel our commitment to service at home and abroad through five Avenues of Service, which are the foundation of club activity.

- Club Service focuses on making clubs strong. A thriving club is anchored by strong relationships and an active membership development plan.
- Vocational Service calls on every Rotarian to work with integrity and contribute their expertise to the problems and needs of society. Learn more in [An Introduction to Vocational Service](#) and the [Code of Conduct](#).
- Community Service encourages every Rotarian to find ways to improve the quality of life for people in their communities and to serve the public interest. Learn more in [Communities in Action: A Guide to Effective Projects](#).
- International Service exemplifies our global reach in promoting peace and understanding. We support this service avenue by sponsoring or volunteering on international projects, seeking partners abroad, and more.
- Youth Service recognizes the importance of empowering youth and young professionals through leadership development programs such as [Rotaract](#), [Interact](#), [Rotary Youth Leadership Awards](#), and [Rotary Youth Exchange](#).

## **History & Today**

Chartered May 16, 1986, the Rotary of Oldsmar/Eastlake is a small but mighty Rotary club located in Oldsmar, Florida, a small city lies along the waterfront shorelines of Tampa Bay, at the easternmost edge of Pinellas County, between metropolitan Tampa and the award-winning white sand beaches of the Gulf Coast. The Rotary Club of Oldsmar/Eastlake is made up of a diverse group of civic-minded business leaders and professionals who join together for fellowship, professional enrichment, and the opportunity to serve. Our members volunteer

time, donate money and expertise to help make our local community and the rest of the world a better place to live through community service and special projects such as Adopt-a-Class programs, Students of the Month, Rising Stars, and Comeback kids at local elementary schools, college scholarships for local high school seniors, Oldsmar CARES Food Pantry, Comfort Kits for the American Red Cross, the Rotary Bistro at the Children's Home Network, Pinellas County Sheriff's Youth Ranch, Adaptive Wheelchairs for Wounded Warriors, Seminar for Tomorrow's Leaders (S4TL), the Rotary Reading Room at the Oldsmar Public Library, Annual Christmas Adopt-a-Family program, Youth Mentoring Programs, Literacy Programs, Library Books for the Philippines, Surgery Equipment for the Bahamas, Helping Babies Breathe in Sierra Leone and other humanitarian work globally.

We meet every Thursday at  
12:00 PM to 1:00 PM.  
Oldsmar Public Library (TECO Room)  
400 St. Petersburg Drive E.  
Oldsmar, FL 34677

The Club is governed by its President and Board of Directors with assistance from the Club Secretary and Treasurer.

## ***Membership Application***

### **Membership Fees**

Fees for corporate membership, including up to three chosen representatives from your business, are just \$495 per annum, with options for payment of this fee in half yearly or quarterly instalments.

We encourage you attend at least two Club meetings prior to submitting your membership application for consideration.

Shortly after submitting your application, you will be contacted by our club's membership chair to arrange an interview to discuss any questions you may have about the merits of joining the Club.

Your membership application will be reviewed by the Membership Committee and then passed on to the Board of Directors for final approval. In total, the approval process will take approximately two to three weeks.

Please forward your completed Membership Application form to

***The Rotary Club of Oldsmar/Eastlake  
PO Box 1372  
Oldsmar, Florida 34677***

**Rotary Sponsor Information**

Name of a Club members who would propose your business for membership:

Member: \_\_\_\_\_ Telephone: \_\_\_\_\_

**Corporate / Business Information**

Business Name: \_\_\_\_\_

Business Description: \_\_\_\_\_

\_\_\_\_\_

Street Address: \_\_\_\_\_

Postal Address: \_\_\_\_\_

Telephone: \_\_\_\_\_ Fax: \_\_\_\_\_

Email Address: \_\_\_\_\_

Website: \_\_\_\_\_

Tell us of your interests in Rotary: \_\_\_\_\_

\_\_\_\_\_

\_\_\_\_\_



**Primary Member - personal information**

Name: Mr / Mrs / Ms / Miss \_\_\_\_\_

Business (if applicable): \_\_\_\_\_ Title: \_\_\_\_\_

Business Telephone: \_\_\_\_\_ Home Telephone: \_\_\_\_\_

Mobile Phone: \_\_\_\_\_ Fax: \_\_\_\_\_

Business Email: \_\_\_\_\_ Home Email: \_\_\_\_\_

Home Address: \_\_\_\_\_

Date of Birth: (optional) \_\_\_\_\_ Place of Birth: \_\_\_\_\_

Partner Name: \_\_\_\_\_ Partner Email: \_\_\_\_\_

Professional Qualifications: \_\_\_\_\_

\_\_\_\_\_

\_\_\_\_\_

Trade Associations and Community Involvement: \_\_\_\_\_

\_\_\_\_\_

\_\_\_\_\_

Personal Interests: \_\_\_\_\_

\_\_\_\_\_

\_\_\_\_\_

Are you a Past Member of Rotary? Yes No

Club Name: \_\_\_\_\_ Years/ Dates: \_\_\_\_\_

Position(s): \_\_\_\_\_

Location: \_\_\_\_\_

I, \_\_\_\_\_, confirm that:

- I was provided information about membership in the Rotary Club of Oldsmar/Eastlake.
- I understand the privileges and responsibilities associated with Rotary membership; and
- I agree to promote the ideals of Rotary and to comply with the requirements of the Rotary Club of Oldsmar/Eastlake.

Signature: \_\_\_\_\_ Date: \_\_\_\_\_

**1<sup>st</sup> Associate Member - personal information**

Name: Mr / Mrs / Ms / Miss \_\_\_\_\_

Business (if applicable): \_\_\_\_\_ Title: \_\_\_\_\_

Business Telephone: \_\_\_\_\_ Home Telephone: \_\_\_\_\_

Mobile Phone: \_\_\_\_\_ Fax: \_\_\_\_\_

Business Email: \_\_\_\_\_ Home Email: \_\_\_\_\_

Home Address: \_\_\_\_\_

Date of Birth: (optional) \_\_\_\_\_ Place of Birth: \_\_\_\_\_

Partner Name: \_\_\_\_\_ Partner Email: \_\_\_\_\_

Professional Qualifications: \_\_\_\_\_

\_\_\_\_\_

Professional Duties: \_\_\_\_\_

\_\_\_\_\_

\_\_\_\_\_

\_\_\_\_\_

Personal Interests: \_\_\_\_\_

\_\_\_\_\_

\_\_\_\_\_

Are you a Past Member of Rotary?                      Yes                      No

Club Name: \_\_\_\_\_ Years/ Dates: \_\_\_\_\_

Position(s): \_\_\_\_\_

Location: \_\_\_\_\_

I, \_\_\_\_\_, confirm that:

- I was provided information about membership in the Rotary Club of Oldsmar/Eastlake.
- I understand the privileges and responsibilities associated with Rotary membership; and
- I agree to promote the ideals of Rotary and to comply with the requirements of the Rotary Club of Oldsmar/Eastlake.

Signature: \_\_\_\_\_ Date: \_\_\_\_\_

**2<sup>nd</sup> Associate Member - personal information**

Name: Mr / Mrs / Ms / Miss \_\_\_\_\_

Business (if applicable): \_\_\_\_\_ Title: \_\_\_\_\_

Business Telephone: \_\_\_\_\_ Home Telephone: \_\_\_\_\_

Mobile Phone: \_\_\_\_\_ Fax: \_\_\_\_\_

Business Email: \_\_\_\_\_ Home Email: \_\_\_\_\_

Home Address: \_\_\_\_\_

Date of Birth: (optional) \_\_\_\_\_ Place of Birth: \_\_\_\_\_

Partner Name: \_\_\_\_\_ Partner Email: \_\_\_\_\_

Professional Qualifications: \_\_\_\_\_

\_\_\_\_\_

\_\_\_\_\_

Professional Duties: \_\_\_\_\_

\_\_\_\_\_

\_\_\_\_\_

\_\_\_\_\_

Personal Interests: \_\_\_\_\_

\_\_\_\_\_

\_\_\_\_\_

Are you a Past Member of Rotary? Yes No

Club Name: \_\_\_\_\_ Years/ Dates: \_\_\_\_\_

Position(s): \_\_\_\_\_

Location: \_\_\_\_\_

I, \_\_\_\_\_, confirm that:

- I was provided information about membership in the Rotary Club of Oldsmar/Eastlake.
- I understand the privileges and responsibilities associated with Rotary membership; and
- I agree to promote the ideals of Rotary and to comply with the requirements of the Rotary Club of Oldsmar/Eastlake.

Signature: \_\_\_\_\_ Date: \_\_\_\_\_

**For Club Use Only**

Approved

Date

Membership Chair:

\_\_\_\_\_

\_\_\_\_\_

Board of Directors:

\_\_\_\_\_

\_\_\_\_\_

Interviewer:

\_\_\_\_\_

\_\_\_\_\_

Member Classification:

\_\_\_\_\_

\_\_\_\_\_

Introduction date:

\_\_\_\_\_

\_\_\_\_\_

Interviewer:

\_\_\_\_\_

\_\_\_\_\_

Sponsor:

\_\_\_\_\_